

Daisetsu Area – Nature and Snowshoeing 5-Day Tour



Daisetsuzan National Park, also known as “the Roof of Hokkaido” is the largest National Park in Japan. Covered with snow in winter, we can not only enjoy beautiful white sceneries but also interact with the nature and feel the majesty of an active volcano. During the harsh winters in Hokkaido, observing the fumaroles blowing up make us realize that the Earth is alive.

All along this adventure tour we will visit limestone caves that was created immemorial time ago, the fumaroles of Kamuy-mintar (Mt. Asahidake) which can be seen only in winter, the beautiful bright Blue River, and the Ainu sacred site of Mt.Arashiyama.

Highlights:

- Explore the quiet and natural scenery of Toma limestone caves, which have been formed since the Jurassic Period, 180 million years ago.
- Observe the dynamic nature of the Earth through volcanic Fumaroles at Mt. Asahidake, which can only be seen in winter.
- Enjoy the beautiful blue and white winter scenery created by volcanoes with snowshoes.
- Learn the connection between Kamuy-mintar (Mt. Asahidake) and Chi-no-mi-siri (Mt. Arashiyama) through the history and culture of the Ainu of Kamikawa.

Location: Asahikawa, Toma, Higashikawa, Biei - Hokkaido

Main Activity: Snowshoeing, Cultural interaction

Difficulty: 2

Tour Dates: From January to the middle of March

Pax: Minimum 4 Maximum 10

Price: From JPY 275,000

[Route map](#)

[Day-by-day Itinerary](#)

[What's included](#)

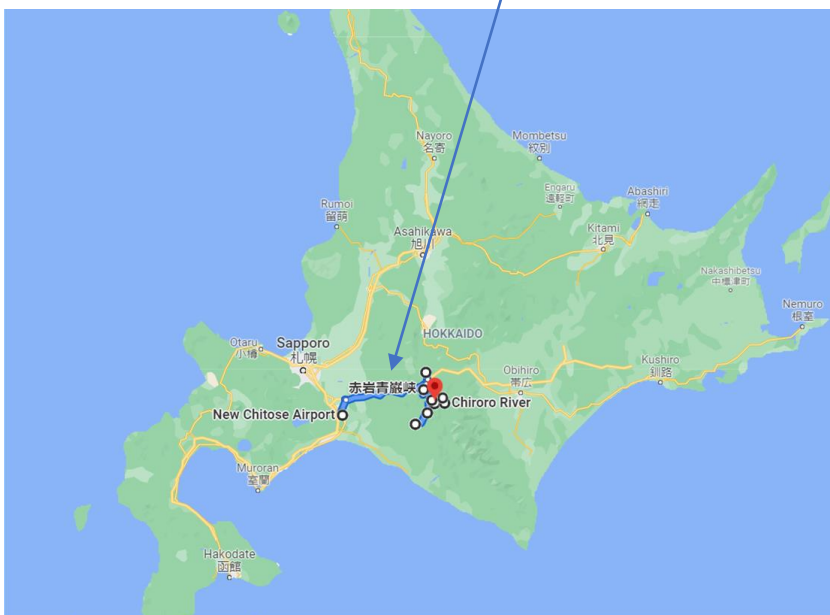
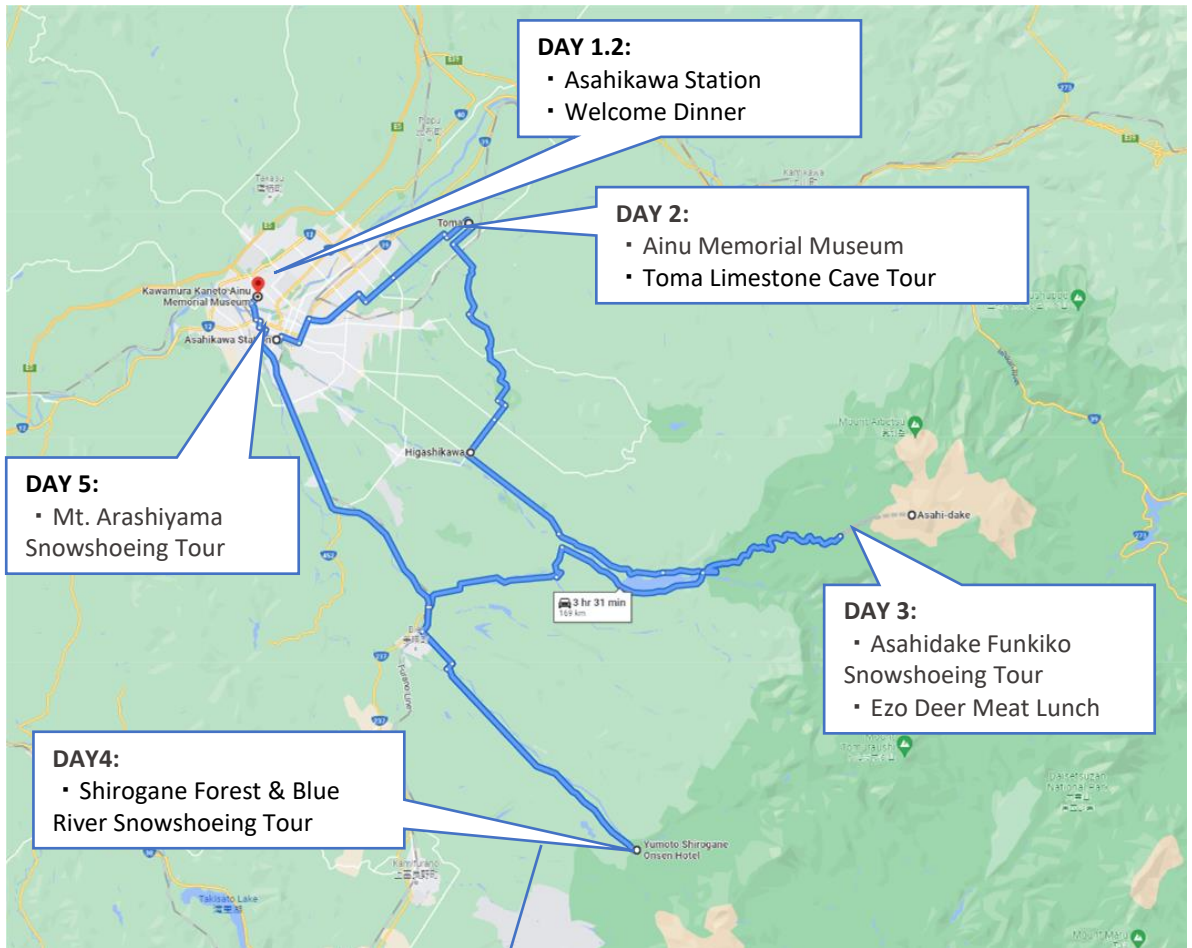
[We provide & What to bring](#)

[About us](#)

[Information and Requirements](#)

[Reservation & Cancellation policy](#)

Route map



Source: Google My Map

Day-by-day Itinerary

Day 1

Meeting the group at Asahikawa Station

In the evening, we will meet at Asahikawa Station. After checking in at the hotel in the center of Asahikawa, we will walk for a nearby restaurant. During the dinner, we will have a brief meeting about our upcoming 5 days of adventure.

Accommodation – Y's Hotel Asahikawa / Large public bath

Included meals – Dinner at a local restaurant

Activity -None

Difficulty: 1

Day 2

Visit Ainu Museum & Explore Toma Limestone Cave

We will start this adventure tour from Kawamura Kaneto Ainu Memorial Museum in Asahikawa. Established in 1916, it is the oldest Ainu museum of Japan. Sitting in "Cise", a traditional Ainu house, we will listen to the owner of the museum, an Ainu descendant of the Kamikawa family, tell us stories of the Kamikawa Ainu. We will learn about the culture and traditions of the Ainu, the indigenous people of Hokkaido. It is an opportunity to deepen our understanding of our upcoming trip such as Mt.Asahidake and Mt.Arashiyama.

After lunch in Toma, a local guide will lead us to the darkness of an ancient limestone cave. Equipped with headlights, we will explore this mysterious space that has been formed during the Jurassic period, 180 million years ago. We will learn about the discovering of this cave and the slow natural process of its formation.

After explore local limestone cave, we will drive up to Asahidake Onsen in the Daisetsuzan National Park, the largest national park in Japan. Asahidake Onsen is one of the popular Onsen resort. Relax and enjoy the Onsen stay.

Accommodation – Yumoto Yukomanso / Onsen spa

Included meals – Breakfast at Hotel, Lunch, Dinner at Onsen Ryokan (Japanese Kaiseki)

Activity :Snowshoeing and explore limestone cave

Time Required: 3 hours

Location : Asahikawa, Toma

Difficulty: 2

Day 3

Snowshoeing about the Fumarole at Mt.Asahidake

After enjoying a homemade Japanese style breakfast at ryokan, we will ride a cable car to Sugatami Station (1,600m / 5,294ft above sea level) on the foothills of Mt. Asahidake. We will put on our snowshoes and start hiking to the fumaroles. Mt. Asahidake, located in the National Park, is an active volcano that is said to have been formed about one million year ago. During the snow season, steam rises from several fumaroles, and we will truly feel the Earth activity !

We will taste Ezo-deer meat at a local restaurant in Higashikawa, running by a hunter. She will share with us the current situation regarding the increasing number of deer being an issue for agriculture and we will have the opportunity to think about the ecosystem of Hokkaido.

Then, we will travel to the nearby town, Biei, known for its beautiful patchwork hills and blue pond. In winter, we will be surrounded by a pure white landscape covered with snow. We will visit a local museum to learn about how local people have lived in harmony with volcanos. In the evening, we will stay at the small Shirogane Onsen, in the south of the Daisetsuzan National Park. At night, we will enjoy the illumination of Shirahige Waterfall.

Accommodation –Daisetsuzan Shirogane Kanko Hotel / Onsen Spa

Included meals – Breakfast, Lunch, Dinner in Hotel

Activity

◆Snowshoeing

Location: Higashikawa

Time required: 4 hours

Difficulty: 2



Day 4

Snowshoeing tour to the Biei Blue River

This morning, we will put on our snowshoes and walk to the Biei River through the lovely forest of birch and spruce that surrounds Shirogane Onsen. Biei River is famous for its beautiful blue color. It is said that water flowing from the Tokachi mountain range has a lot of sulfur in it, which give it this amazing cobalt color. We will enjoy a beautiful landscape with the contrast between the white snow and the blue river. After being healed by the beautiful nature, we will have lunch at a local restaurant in Biei before traveling back to Asahikawa.

In the late evening, we will enjoy last dinner at a local restaurant in the center of Asahikawa to celebrate the completion of our tour in advance.

Accommodation – Hotel WBF Grande Asahikawa / Onsen Spa
Included meals - Breakfast, Lunch, Dinner in a local restaurant

Activity

◆ Snowshoeing

- Time Required: 2 hours
- Location: Biei

Difficulty: 2



Day 5

Snowshoeing Tour at Mt. Arashiyama and End of the Tour at Asahikawa

The last activity of our trip is snowshoeing tour at Mt. Arashiyama, located in the downtown of Asahikawa. Mt. Arashiyama was once a sacred place that connected humans with the gods, which the Kamikawa Ainu worshipped as “Chi-nomi-siri” (We, Pray, Mountain). At the summit (254m/830ft), we will enjoy a panoramic view of Asahikawa city.

After going down the mountain, the tour will wrap up at Asahikawa Station. From there, we can either take a train to Sapporo or the airport shuttle bus to Asahikawa Airport.

Included meals – Breakfast

Activity

◆ Snowshoeing on Mt. Arashiyama

Location: Asahikawa

Time required: 2 hours

Difficulty: 2



Accommodations :

Dates	Location	Type	Room	Spa
Day1 Y's Hotel Asahikawa Ekimae	Asahikawa	Hotel	Private room with ensuite	Spa
Day2 Yumoto Yukomanso	Higashikawa	Onsen Ryokan	Private room with ensuite	Onsen Spa
Day3 Daisetsuzan Shirogane Kanko Hotel	Biei	Onsen Hotel	Private room with ensuite	Onsen Spa
Day4 WBF Grande Asahikawa	Asahikawa	Hotel	Private room with ensuite	Onsen Spa

Food & Accommodation

Breakfast & Dinner

All breakfasts on this tour will be served at our accommodation. The meals will be set menus or buffet, containing traditional Japanese dishes beautifully presented in separate plates & bowls. If you are a master of chopsticks, these skills will be handy, otherwise western utensils are usually available on request. As for dinner on this tour, we will take you to the local restaurant to taste authentic local food, including seafood, fresh vegetables and etc. Two dinners will be served in our accommodation, which is traditional Japanese dishes.

We will do our best to make arrangements for any dietary requirements so please be sure to let us know your needs in advance.

What's included

- 4 nights accommodation
- 4 breakfasts, 3 lunches, 4 dinners
- Entrance fee and all the activities
- 4 Days Chartered Car with driver
- English speaking Japanese guide(s)

Not included

- Airfares
- Personal expenses
- Travel insurance
- Alcoholic drinks with included meals

Please note that you will be asked to show your passport when checking into accommodation in Japan. It is a requirement for accommodation providers to take a photocopy of the passport of overseas guests.

We provide & What to bring

We provide

- Snowshoes and poles
- Head torch
- First-aid kit
- Safety equipment and maps

What to bring

Essentials

- Hard Shell jacket and pants
 - Warm base layers top and bottom
 - Thick Fleece or down jacket
 - Waterproof gloves, beanie, neck warmer, etc
 - Winter / snow boots and thick socks
 - Change of clothes (For when you sweat)
 - Goggles or sunglasses (Goggles is better in Asahidake)
 - Backpack with enough capacity to carry all of the above
 - Insulated drink bottle
 - Mask
 - Travel Insurance
-
- Cash in Japanese yen. Small restaurants and shops in rural parts of Japan do not accept credit cards. You can withdraw cash from an ATM at a post office and Seven Eleven convenience stores.

Recommended items

- Camera
- Personal snacks

About us



Hokkaido Treasure Island Travel

We are Hokkaido Treasure Island Travel (HTIT), an award-winning team of creators of unique, perfectly tailored Hokkaido travel experiences. HTIT Team is deeply rooted in Hokkaido, North Japan. In 2004, HTIT started its journey as a pioneer of a new style of adventure travel by sharing the treasures of Hokkaido. We are constantly opening new doors and making local destinations previously inaccessible for travelers available all over Hokkaido. We provide a compelling combination of personal and professional travel advice, knowledge beyond that of the guidebook insider, and behind the scenes access to places and authentic local experiences generally not available for the public. Our mission is to create for you a journey of a lifetime, every time you travel with us.

Tour Guides:

Ms. Ayaka Yoshikawa

Ayaka is an expert local guides to offer you great experiences in Hokkaido. Raised in Sapporo. Graduated from Lincoln University in New Zealand with a Bachelor's degree in Recreation Management and Outdoor Leadership. In New Zealand, she worked as a cycling guide for a tour operator offering adventure tours for seven years. Then she worked for JICA in El Salvador for two years, where she produced local environmental education and ecotourism. Currently, she is the president of Adventure Hokkaido, which provides adventure tours in Hokkaido, and she also works as a guide in the field. Certified Hokkaido Outdoor Guide (Summer Trekking), Certification in Wilderness Advanced First Aid (WAFA)



Information and Requirements

Dietary Restrictions

We believe that eating like the locals is the best way of experiencing Hokkaido's unique culture. However, we understand that it's not possible for everyone to do this and we're more than happy to cater for food allergies, dietary restrictions, and special requirements. If you have any diet restrictions or preferences, please tell us in the Registration Form at the time of booking, and we will do our best to accommodate your dietary needs.

In some rural areas particularly, we may ask you for some flexibility. For example, if you require halal food, we may be able to substitute for a vegetarian option instead. Please also be aware that for those who are allergic to MSG we may struggle to arrange a good alternative at every meal in Japan. Some of our overseas guests in the past found it difficult to find ready-made foods completely free of MSG, especially when buying from convenience stores. Most Japanese supermarkets sell simple foods like plain bread, boiled eggs, vegetables and fruits, so you should always be able to find something suitable. The most important thing about dietary requirements is to let us know in advance so we can prepare and organize the foods you need.

Emergency Response Plan

Your safety is our top priority, closely followed by fun and comfort! All our tour guides have years of guiding experience in the outdoors under their belt. The activity guide has taken a 40-hour Wilderness First Aid or Advanced Firefighting Lifesaving Course. At all times, our guides will carry a first-aid kit, as well as have an extra kit in our vehicle and hold an Emergency plan with the nearest emergency hospital for any severe accident. In case of heavy rain, strong winds or other unsafe weather conditions for walking, there may be times when we have to change our tour plan. In such cases, we will try to substitute the original activity with other alternatives such as sightseeing, visiting museums or hot springs. We are here to turn a bad day around into a fun day!

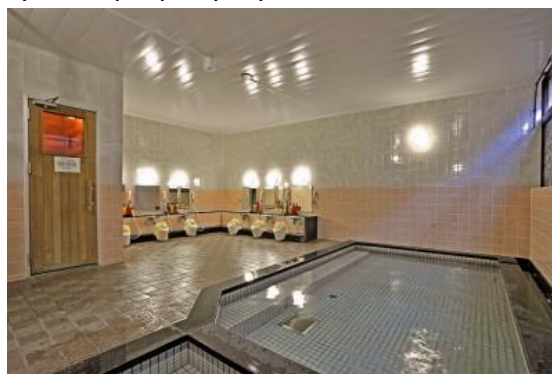
Weather Conditions

Except some parts of Southern Hokkaido, almost all Hokkaido has a subarctic climate with low temperatures throughout the year. And in mid-winter, many days are below freezing even during the daytime, with the lowest temperature being around -20°C/-4°F. The average highest temperature between January to March is 8°C/46°F and the lowest is -15°C/5°F.

What you better to know about Japanese style hotel

In this tour, some of the hotel feature Japanese style rooms with tatami mats with rice paper partitions and futon (sleeping mattresses). Here are some good-to-know facts about Japanese style hotel to avoid unwelcome surprises.

- You are sleeping on the floor. A traditional Japanese room does not have western beds, instead futon bedding is provided. Often hotel staff enter your room and prepare your futon while you are out for dinner.
- Hotel provide "yukata", which is a traditional night robe that looks like a kimono. You can wear it to the public spa and also to dinner in Hotel, basically anywhere within the hotel facility. Our guides will explain how to wear yukata properly if you are unsure.



What is a Japanese Spa

Some hotels have spa, that are public Spa. Please keep in mind that there are certain protocols that go with bathing in a public Spa, however they're super simple!

- You bathe in your birthday suit, that's right, no clothes or swimwear is allowed in the bath. Don't worry, no one is looking!
- Take a shower before you enter the water. It's important for the waters to stay clean so make sure to rinse all soap off and long hair should be tied up. You can take a small towel in if you're feeling shy, but the towel cannot touch the waters.
- Be respectful of others. Do not run, talk too loudly, drink alcohol, or splash around while in the spa. Don't forget to take in a hand towel, so that you can lightly dry yourself before returning to the changing room. We're quite fussy about keeping the floors of the changing room dry. Last but not least, relax and enjoy yourself!

Reservation & Cancellation Policy

Reservation

When we receive your reservation request, we will send you an email with a link to a page on our website, where it asks you to fill in the Registration Form. We will ask for your contact details and personal information such as your height and dietary requirements etc., in order for us to adequately organise and arrange the tour service. Once the Registration Form is completed, you will be taken to the Shopping cart to review your booking, and finally onto the Check Out page to make the payment (Deposit/Full) to secure the booking.

Payment Methods

We will send a booking confirmation by email with an invoice requesting a deposit

- * A 20% Deposit is required for the confirmation of the booking.
- * The remaining cost(Balance Payment) is due 21 days before your arrival.
- * Payment is acceptable by Credit card or Bank Transfer:
 - A. Credit card
 - * We will send you a link with a form to fill in your credit card details
 - B. Bank Transfer
 - * Please process the payment from your local bank in Yen.
 - * All Transaction Fees will be paid by remitter.

Cancellation

- 20% of the tour price will apply 20 days prior to the travel starting date
- 30% of the tour price will apply 7 days prior to the travel starting date
- 40% of the tour price will apply 1 days prior to the travel starting date
- 50% of the tour price will apply on the travel starting date
- 100% of the tour price will apply after the start of the tour or the traveler does not participate in the Tour without notice

Disclaimer

Assumption of risk and safety declaration

Travelers are advised that all activities are undertaken entirely at their own risk and they must behave in a fit and proper manner at all times in accordance with Hokkaido Treasure Island Travel Inc's guidelines. All adventure tours and outdoor activities carry inherent risks and Hokkaido Treasure Island Travel Inc nor its partners do not assume any responsibility for accidents that are caused by its customers or caused by factors outside of human control.

With the purchase of your trip you acknowledge that:

By its very nature, adventure travel, hiking and cycling tours are more challenging and demanding with a significantly higher level of risk, and involve potential exposure to injury and possibly death.

Additional dangers and risks associated with adventure travel may include difficult and dangerous terrain; high altitude; extremes of weather, including sudden and unexpected changes; political instability; remoteness from normal medical services and from communications; and evacuation difficulties in the event of illness or injury.

You must follow our guide's instructions and use any safety equipment provided at all times. For the above reasons you accept the inherent and increased dangers and risks associated with the proposed adventure and the accompanying risk of injury, death or property damage or loss.

Our Responsibilities and Exemptions from Responsibility

All Travelers are required to acknowledge the Terms and Conditions that we provide to them before contracting with us. The Traveler acknowledges that he or she understands the Terms and Conditions, as well as the following information about exemptions from our responsibility.

- We shall be responsible for compensating any damage caused to the Traveler intentionally or negligently by us or by our agent in the performance of this Contract. However, this shall be limited to cases when we have received notice within two years from the time when the accident occurred.

- Except as provided in the preceding Paragraph, we will not be responsible for compensation in the following cases:

- (1) Acts of providence
- (2) Maelstrom of war or civil commotion
- (3) Suspension of Tour Services including transport and accommodation facilities
- (4) Orders from government and public agencies
- (5) Other causes beyond our control or the control of our agents

Tour Operator / Contact

Hokkaido Treasure Island Travel Inc.

9F Daito Bldg, Minami 2-jo Higashi 2-chome 8-1,

Chuo-ku, Sapporo City, Hokkaido, Japan

